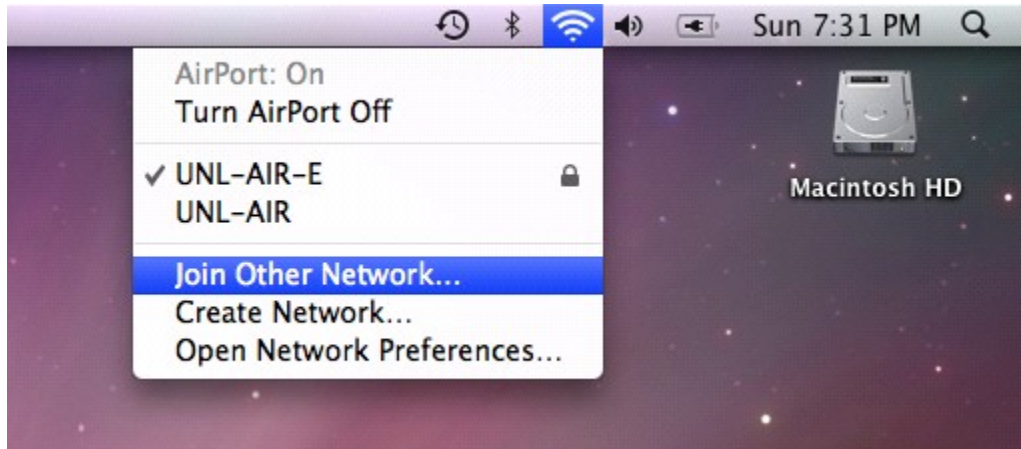


Manual instructions for connecting to the “UNL-AIR-E” wireless network for OS X Macintosh computers.

This example was done using Mac OS 10.5. Other version may be vary slightly but the information given will allow you access to the UNL wpa2 encrypted network.

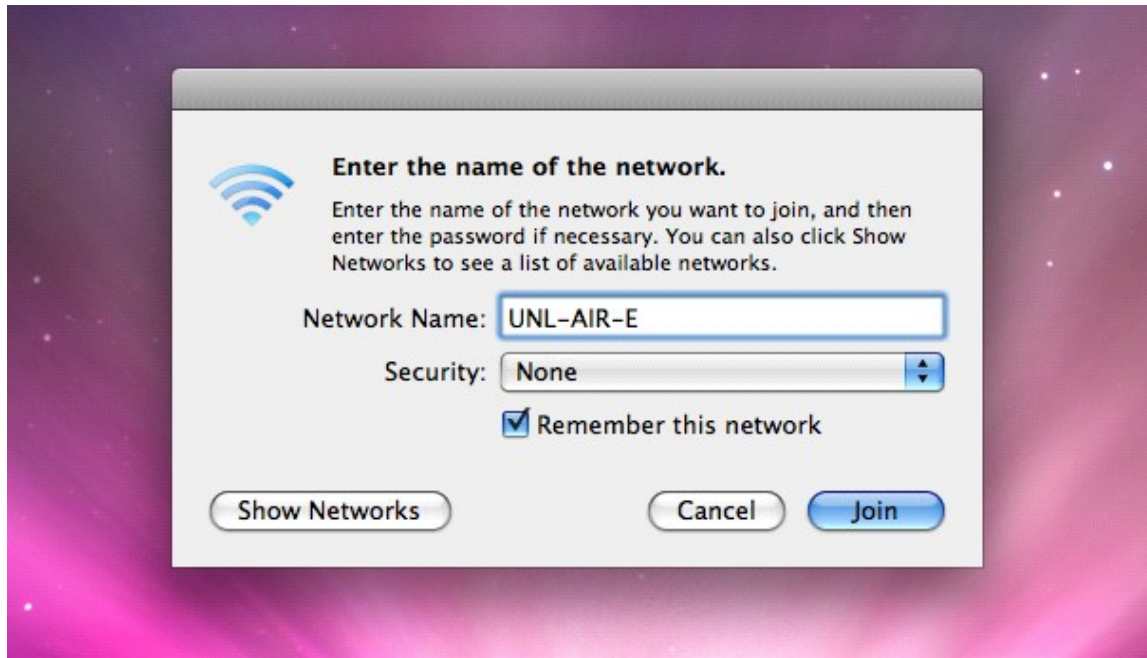
A1) Go to the AirPort icon in the upper right hand corner of your computer. Click on the AirPort icon to display the pull down menu. Click on the “Join Other Network...” option.



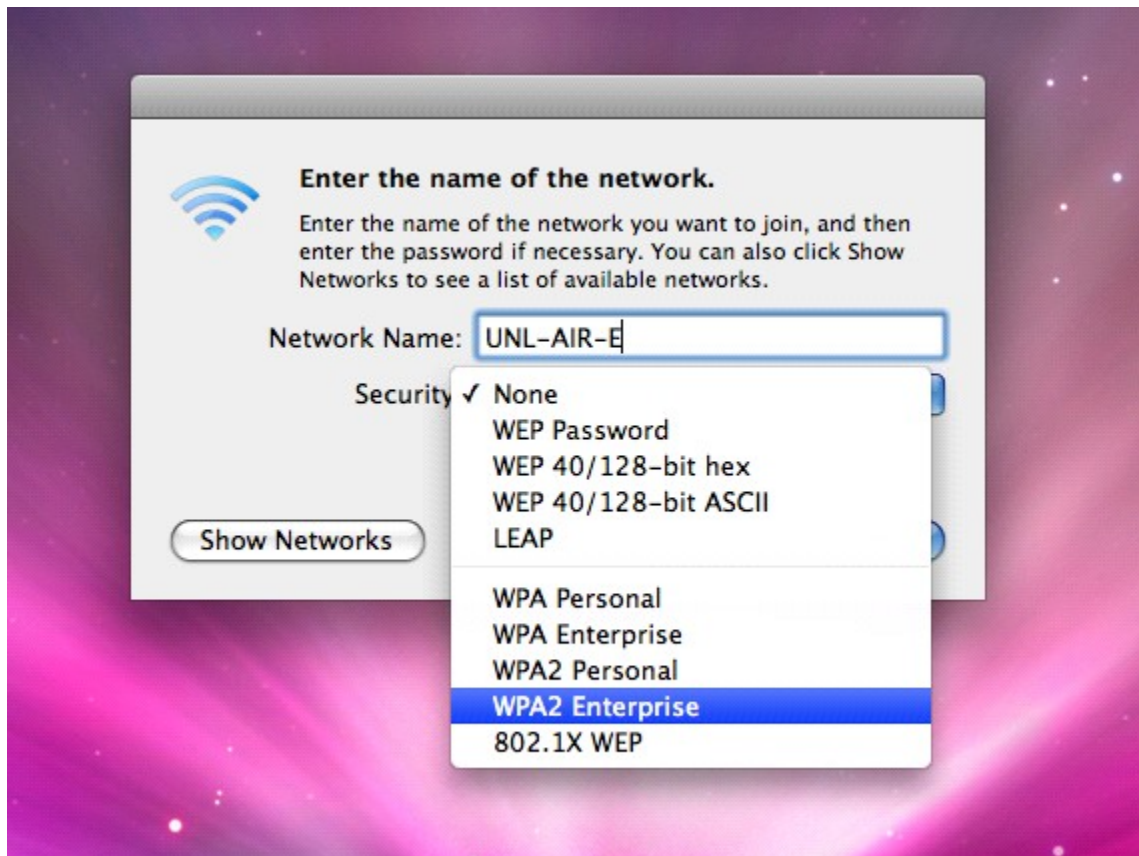
B2) A new window will appear



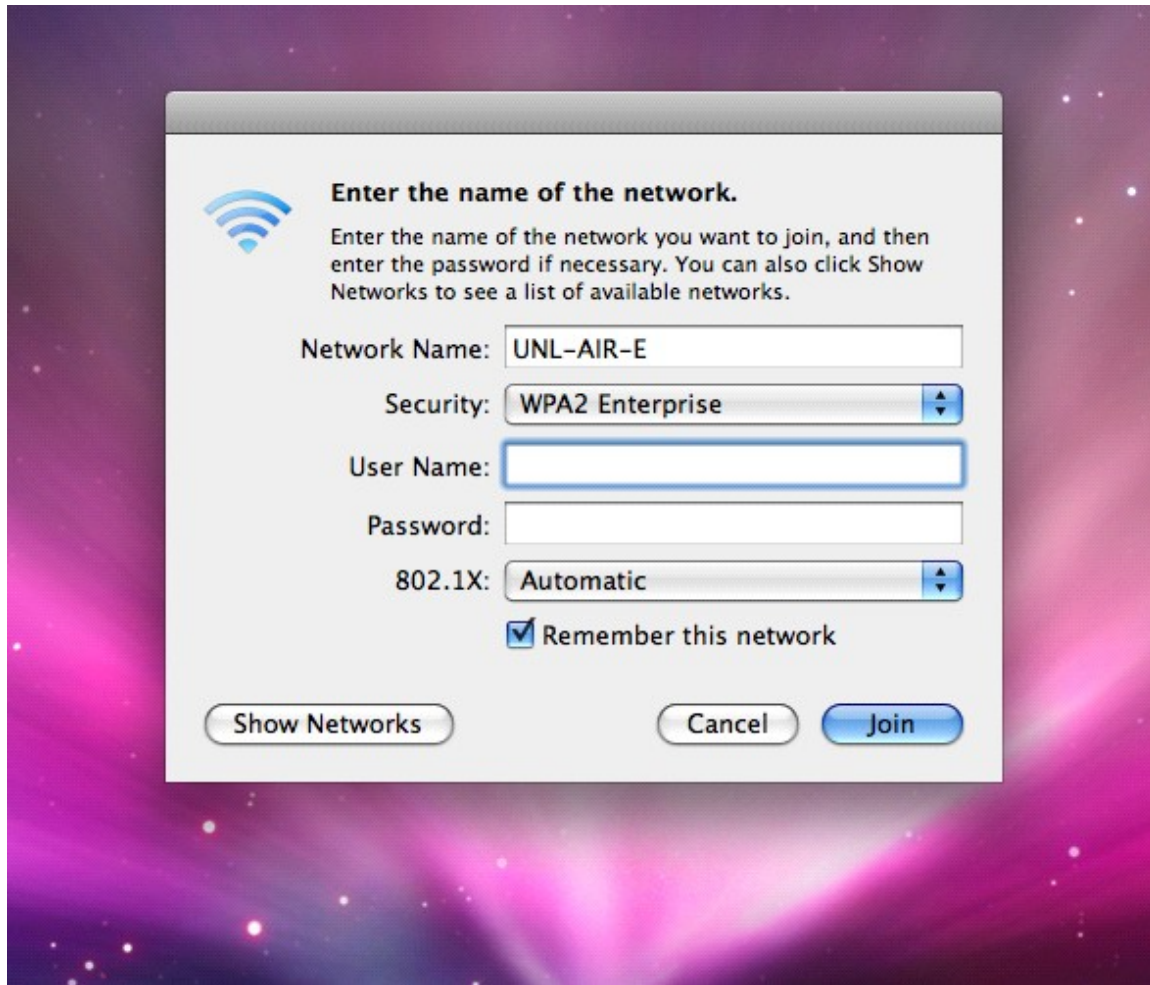
In the “Enter the name of the network window” type in “UNL-AIR-E” in the “Network Name:” box.



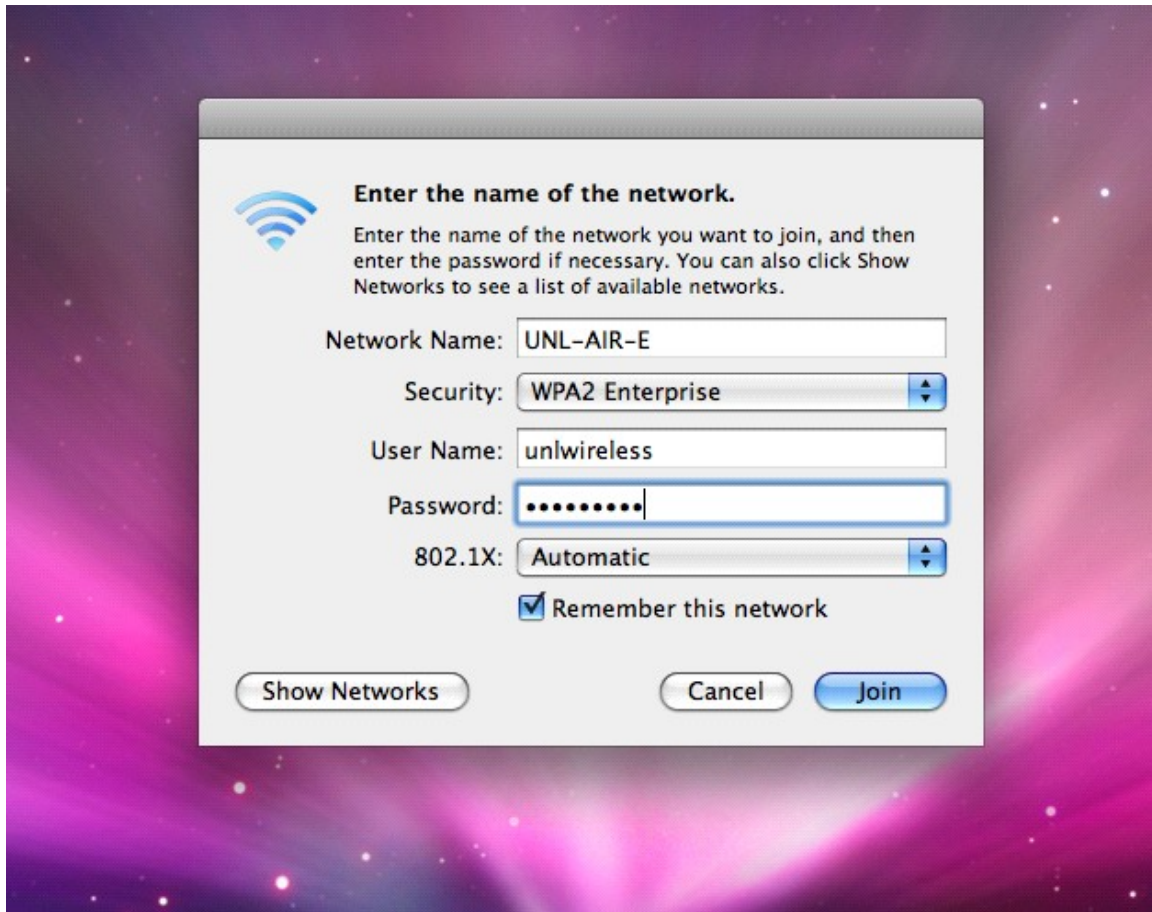
In the "Security:" pull down menu box choose "WPA2 Enterprise"



In the "802.1X:" pull down menu box select "Automatic".



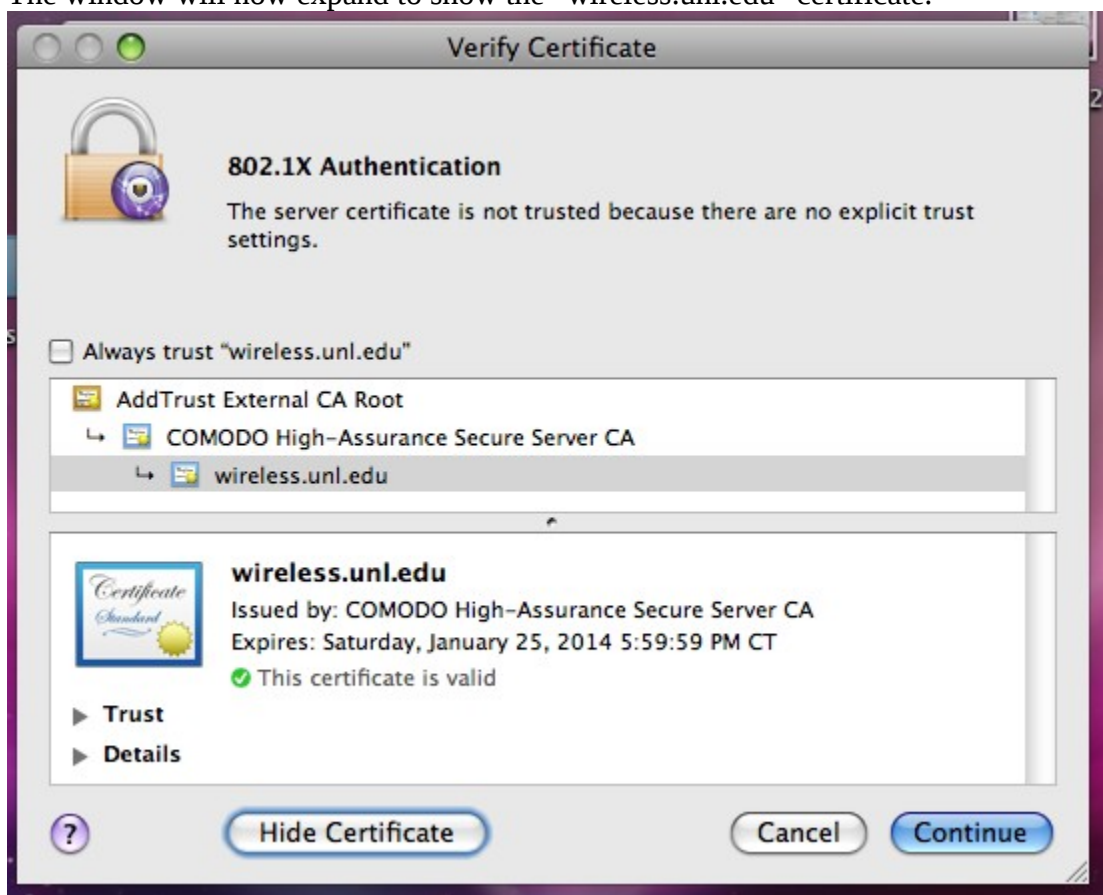
Now go back up to the “User Name:” box and type in “unlwireless”.
In the “Password:” box type in “encrypted”.
Click on the “Join” button.



When the “Verify Certificate” window appears click on the “Show Certificate” button.

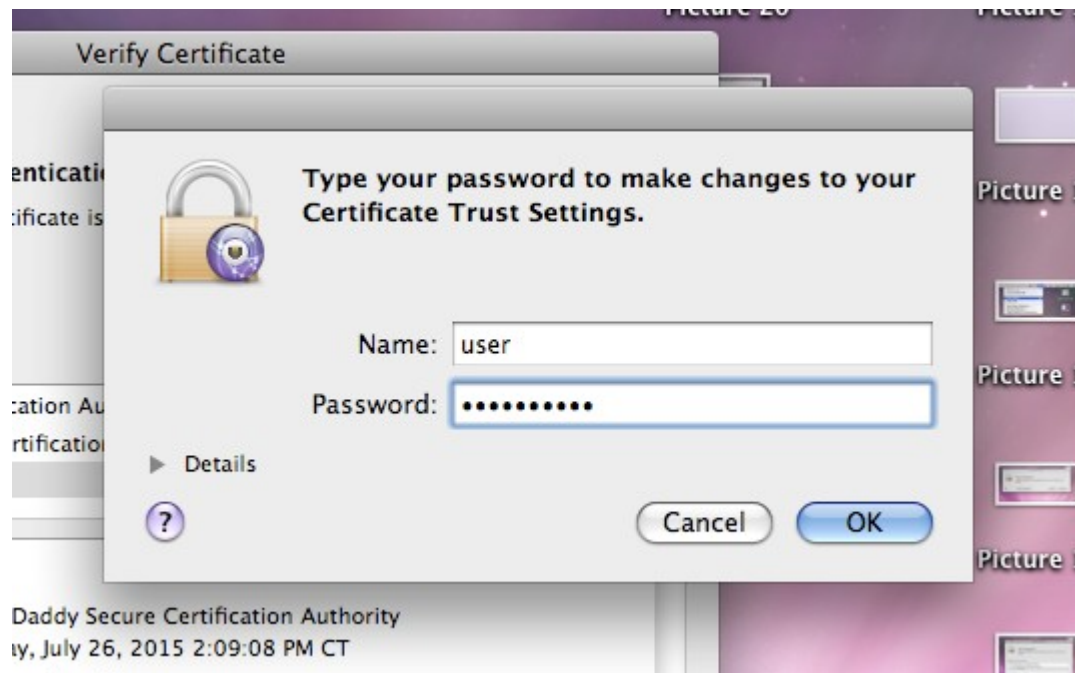


The window will now expand to show the “wireless.unl.edu” certificate.



Verify the certificate is the same as the certificate above. Then click “Continue”.

To save the changes to your computer you may be presented with a new window and you must enter the “Name:” and “Password:” you use to log into your computer. Do NOT use the example name and password in the figure below. You may need to use the user name and password for the administrator of the computer you are using.



You should now be able to connect to the “UNL-AIR-E” network.